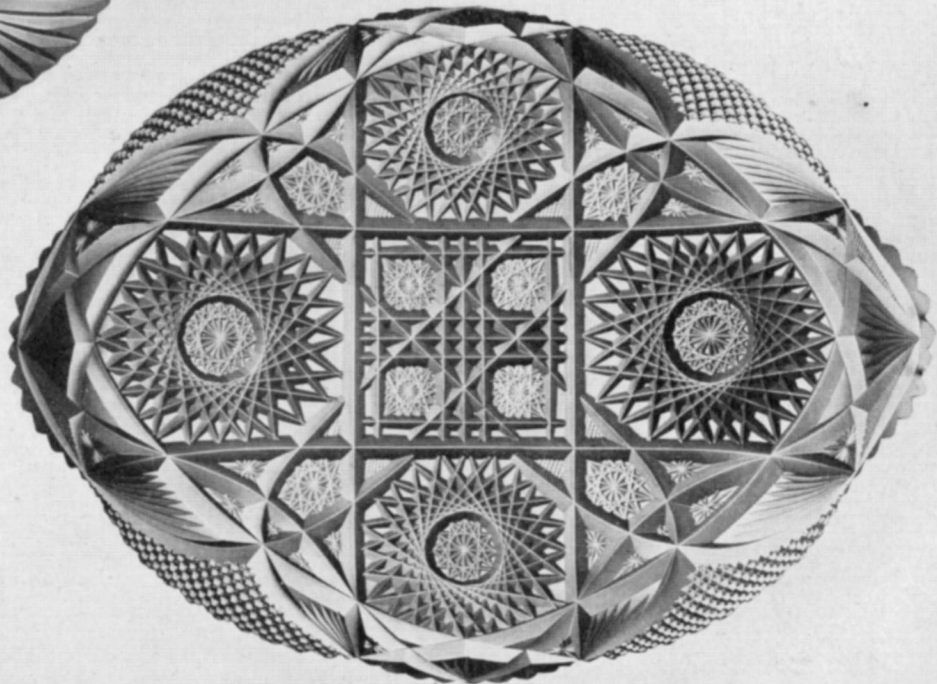


NO.63 ICE CREAM TRAY
GALATEA
\$22.00



NO.63 ICE CREAM TRAY
AMHERST
\$28.00





NO. 281 VASE
ANGELUS
17 IN. \$46.00



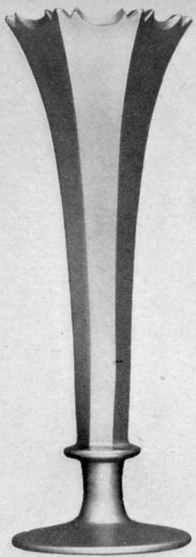
NO. 279 VASE
SESAME
12 IN. \$36.00 14 IN. 42.00
16 IN. 50.00



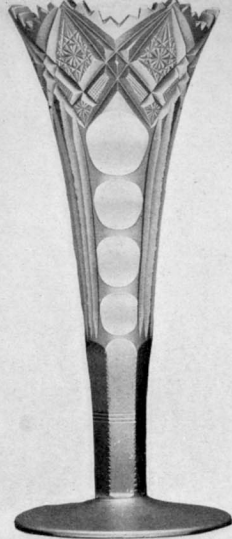
NO. 216 VASE
FLORENTINE
6 IN. \$16.00 7 IN. 18.00
8 IN. 20.00



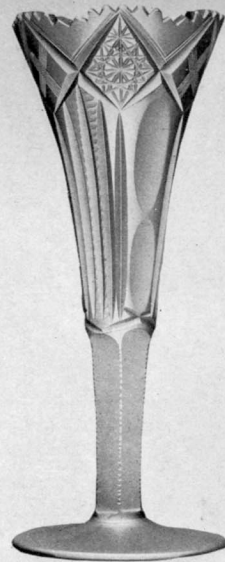
NO. 281 VASE
OTHELLO
17 IN. \$36.00



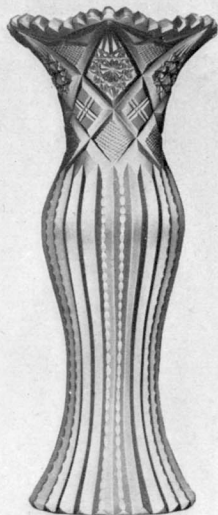
NO. 41 VASE
PLUTE
8 in. \$4.50 10 in. 6.00
12 in. 7.50 14 in. 10.50
16 in. 16.00 18 in. 21.00



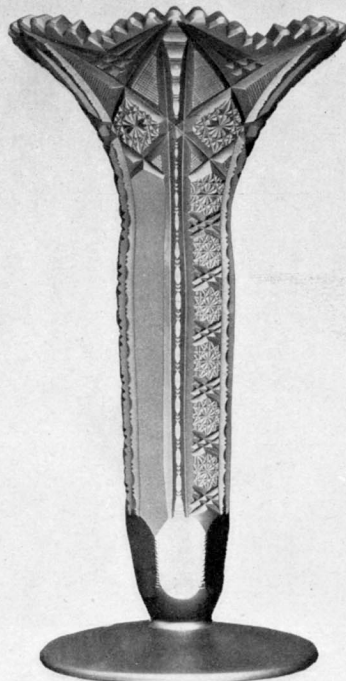
NO. 308 VASE
IRIS
8 in. \$4.00 10 in. 5.50
12 in. 7.00 14 in. 10.00
16 in. 15.00 18 in. 20.00



NO. 308 VASE
FRANCONIA
8 in. \$3.00 10 in. 4.00
12 in. 5.00 14 in. 7.00
16 in. 12.00 18 in. 16.00



NO. 296 VASE
HYACINTH
7 in. \$6.00 9 in. 8.50
10½ in. 11.00 12 in. 15.00

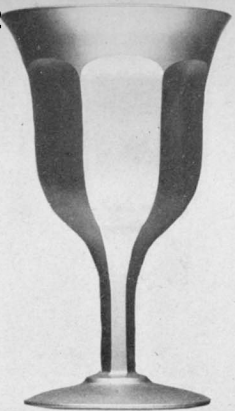


NO. 291 VASE
CYPRESS
8 in. \$9.00 10 in. 12.00
12 in. 15.00 14 in. 20.00
16 in. 24.00 18 in. 34.00

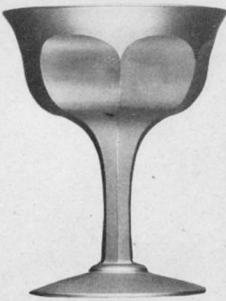


NO. 296 VASE
DAFFODIL
7 in. \$6.00 9 in. 8.00
10½ in. 10.50 12 in. 13.00

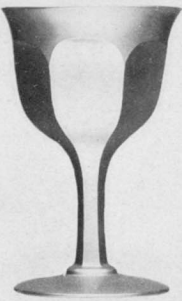




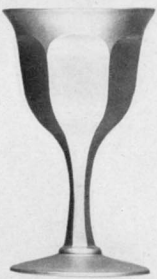
NO. 182
GOBLET
DOZ. \$ 30.00



NO. 182
SAUCER CHAMPAGNE
DOZ. \$ 30.00



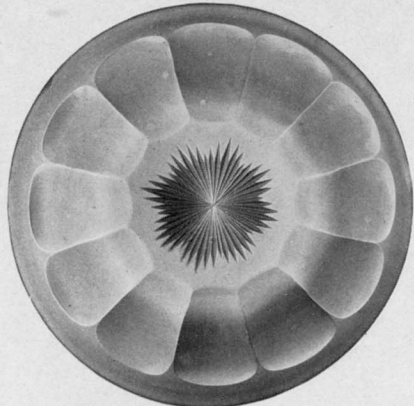
NO. 182
CLARET
DOZ. \$ 24.00



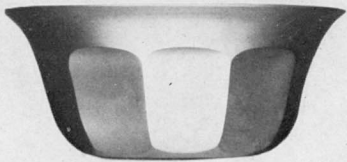
NO. 182
WINE
DOZ. \$ 22.00



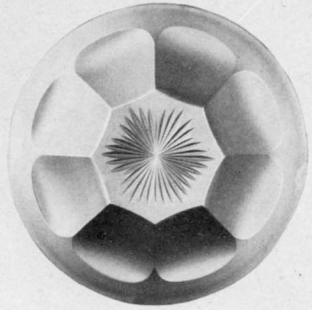
NO. 182
SHERRY
DOZ. \$ 24.00



NO. 214
PLATE
7 IN. DOZ. \$ 30.00



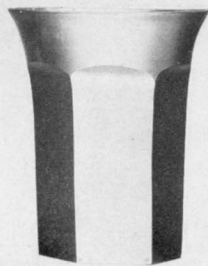
NO. 214
FINGER BOWL
DOZ. \$ 30.00



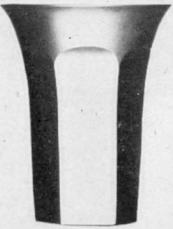
NO. 299
PLATE
4 3/4 IN. DOZ. \$ 24.00



NO. 182
CORDIAL
DOZ. \$ 20.00



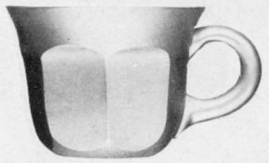
NO. 182
1/2 PT. TUMBLER
DOZ. \$ 24.00



NO. 182
CHAMPAGNE TUMBLER
DOZ. \$ 21.00



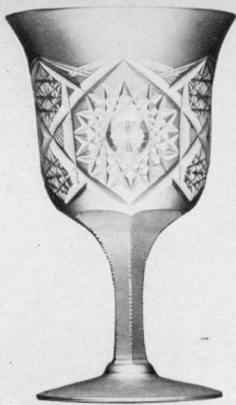
NO. 182
WHISKEY TUMBLER
DOZ. \$ 21.00



NO. 224
LEMONADE
DOZ. \$ 24.00

STEMWARE FLUTE





No. 182
GOBLET
Doz. \$30.00



No. 182
SAUCER CHAMPAGNE
Doz. \$30.00



No. 182
CLARET
Doz. \$24.00



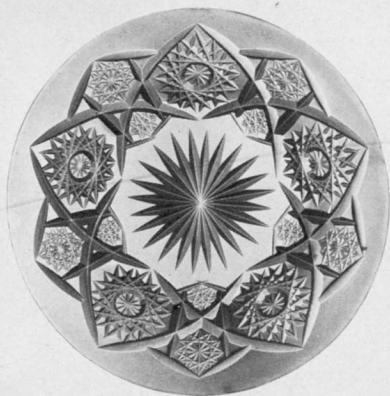
No. 182
WINE
Doz. \$22.00



No. 182
SHERRY
Doz. \$24.00



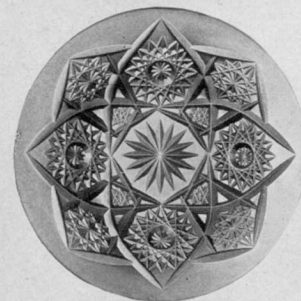
No. 182
CORDIAL
Doz. \$20.00



No. 214
PLATE
7" Doz \$30.00



No. 214
FIG BOWL
Doz. \$30.00



No. 299
PLATE
4 3/4 Doz. \$24.00



No. 182
1/2 Pt. TUMBLER
Doz. \$24.00



No. 182
APPOLINARIS TUMBLER
Doz. \$22.00



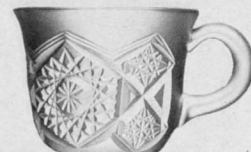
No. 182
CHAMPAGNE TUMBLER
Doz. \$21.00



No. 182
WHISKEY TUMBLER
Doz. \$21.00



No. 31
ALE TUMBLER
Doz. \$24.00



No. 224
LEMONADE
Doz. \$27.00

STEMWARE ROXBURY





GOBLET
DOZ. \$40.00



SAUCER CHAMPAGNE
DOZ. \$36.00



CLARET
DOZ. \$36.00



WINE
DOZ. \$33.00



SHERRY
DOZ. \$36.00



FINGER BOWL
DOZ. \$40.00



LEMONADE
DOZ. \$30.00



CORDIAL
DOZ. \$30.00



1/2 PINT TUMBLER
DOZ. \$36.00



CHAMPAGNE TUMBLER
DOZ. \$33.00



WHISKEY TUMBLER
DOZ. \$30.00

NO.520 STEMWARE HARVARD



GOBLET
\$27.00



SAUCER CHAMPAGNE
\$27.00



CLARET
\$22.50



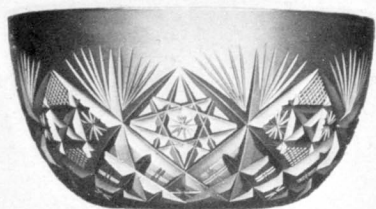
WINE
\$20.50



SHERRY
\$22.00



CORDIAL
\$20.00



FINGER BOWL
\$25.60
D SM SIZE
\$23.00



LEMONADE
\$20.00



1/2 PT. TUMBLER
\$24.00



CHAMPAGNE TUMBLER
\$21.00

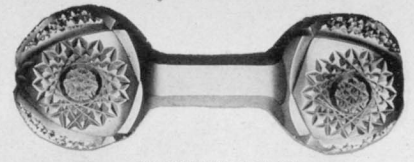


WHISKEY TUMBLER
\$20.00

NO. 520 STEMWARE SAN MATEO



NO 289 SHERBET
ROXBURY
DOZ. \$30.00



NO 310 KNIFE REST
CHRYSANTHEMUM
EA. \$7.00



NO.288 EGG CUP
FLUTE
DOZ. \$27.00



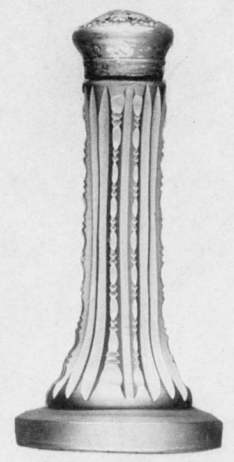
NO.198 WHISKEY TUMBLER
ROXBURY
DOZ. \$20.00



NO.198 WHISKEY TUMBLER
LAKEWOOD
DOZ. \$30.00



NO.176 1/2 PT. TUMBLER
WADSWORTH
DOZ. \$13.00



NO.157 SALT OR PEPPER
PALMETTO
EA. \$3.50



NO.255 1/2 PT. TUMBLER
LAKEWOOD
DOZ. \$36.00





NO. 256 CHERRY JAR
EA. \$8.00



BITTERS BOTTLE
EA. \$5.50



PT. GLOBE DECANTER
EA. \$10.00

COCKTAIL SET. SAN MATEO



NO. 520 MIXING GLASS
EA. \$3.50



NO. 520 COCKTAIL GLASSES
DOZ. \$22.50

IN making up our catalog for the Winter of 1903 and 1904 we have studied the convenience of the buyer, and have embraced in one book a larger variety of styles and cuttings than ever before. It contains all our latest productions, which will be found grouped by themselves in the front portion of the book, and added to these are many illustrations of articles, still new, which have proved their merit to the many friends of "Clark" cut glass.

T. B. CLARK & CO., Inc.

