

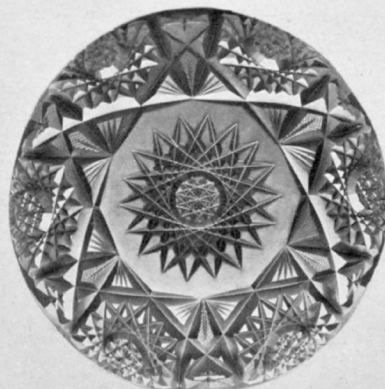
1902 Pitkin & Brooks 1903



CARAFE SQUAT
Each \$7.00



OIL BOTTLE
Each \$5.00



BERRY NAPPY
7 inch, each \$6.00
8 " " 7.20
9 " " 10.00



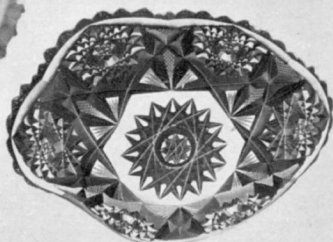
COLOGNE
6 oz., each \$5.50
10 " " 8.00
14 " " 10.50
16 " " 13.00



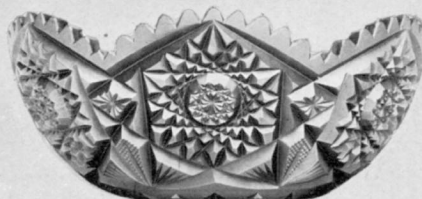
TUMBLERS
1-2 Pt., per Doz. \$24.00



JUC No. 450
Quart, - \$11.00
3 Pint, - 14.00



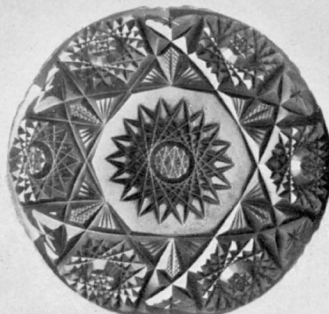
BONSON No. 48
Each \$3.70



SALAD BOWL
7 inch, each \$3.50
8 " " 8.00
9 " " 12.00



FINGER BOWL
Per dozen \$27.00



SAUCER
5 inch, per Doz. \$33.00
6 " " 38.40



DECANTER QUART
Each - \$13.00
Handled, each 15.50

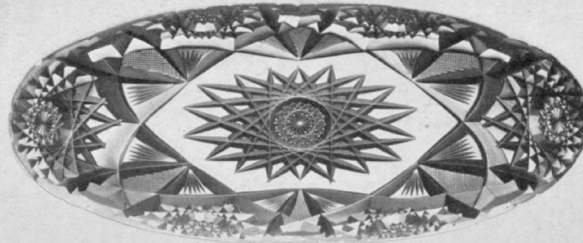
No man can get or keep first place unless
he has goods of advanced character.

Mail orders receive prompt and expert
attention.

1902 Pitkin & Brooks 1903



BONBON No. 54
Each \$4.00



CLADYS PATTERN

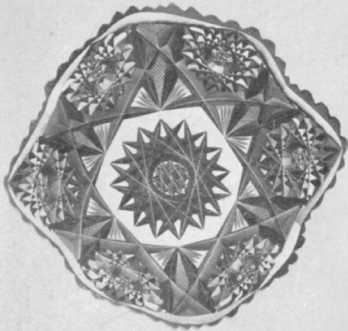
CELERY TRAY
11 inch, each \$8.00



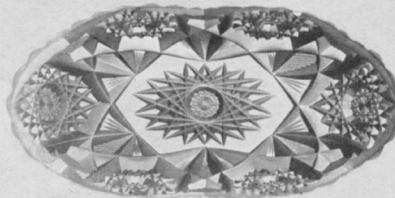
ROSE BOWL
6 inch, each \$9.00
7 " " 11.00

More people want this kind of stuff than
you half imagine—they know
"what's what."

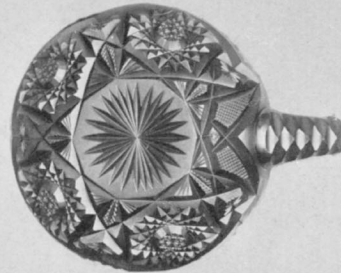
Handle goods that class you where you like
to be classed—rich cut glass.



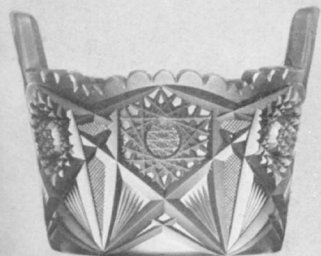
BONBON No. 13
Each \$4.00



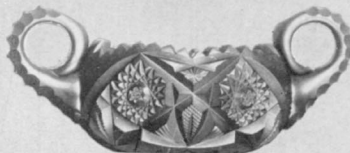
SPOON TRAY
Each \$5.00



HANDLED NAPPY
5 inch, each \$3.00
6 " " 3.50



ICE TUB
Each - \$12.00



SUGAR AND CREAM
No. 546. Per Pair \$8.00



HANDLED LEMONADES
Per dozen \$24.00



SUGAR AND CREAM
No. 546. Per Pair \$8.00



CHAMPAGNE JUG
583. Each \$20.00

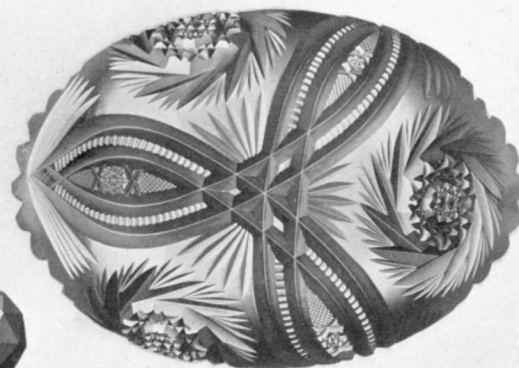
1902 Pitkin & Brooks 1903

CAROLYN PATTERN



SALAD BOWL
8 inch, each, \$11.00
9 " " 14.50
10 " " 20.00

"Be in the game." Your customers know a good thing when it is brought to their notice.



SPOON TRAY
Each - \$6.80



TUMBLERS HALF PINT
Per Dozen, \$30.00



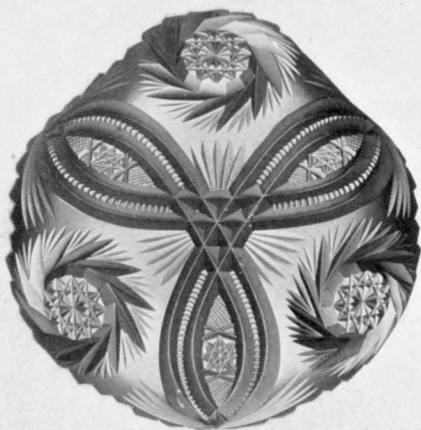
OIL GLOBE
Each - \$6.00



HANDLED NAPPY 6 INCH
Each - \$5.00



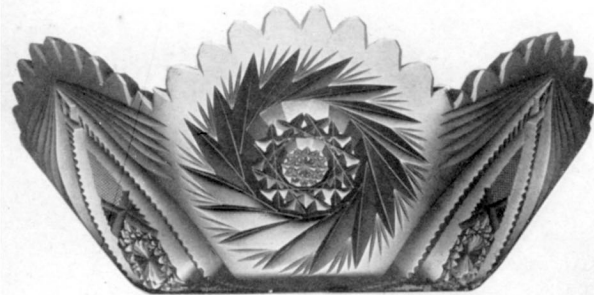
CARAFE, QUART
Each - \$8.00



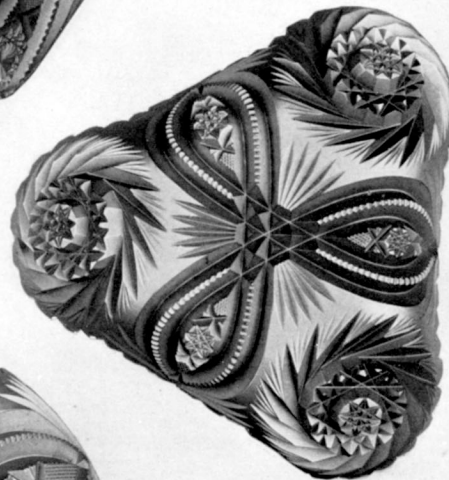
BONBON SHELL
6 inch, each, \$5.20

1902 Pitkin & Brooks 1903

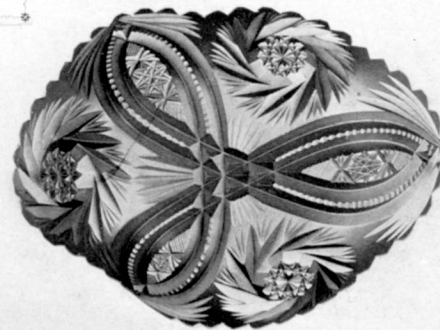
CAROLYN PATTERN



BOWL No. 349
8 inch, each, \$13.00
9 " " 17.00



BONBON No. 12
9 inch, each, \$6.50



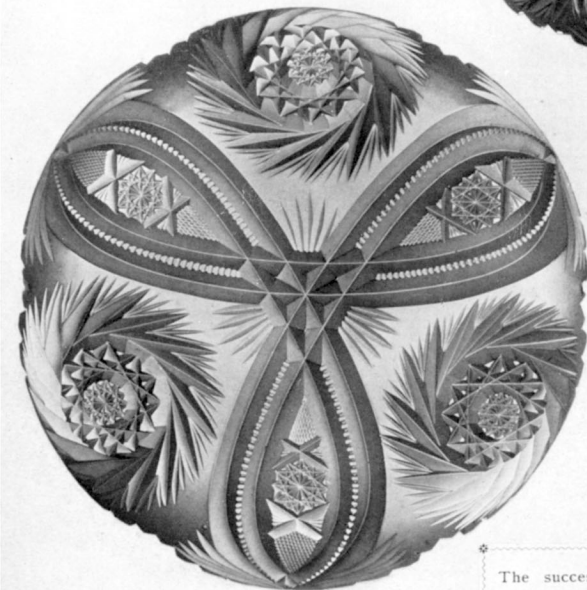
BONBON No. 48
6 inch, each, \$4.50



COLOGNE
6 oz. each, \$7.00
10 " " 8.50

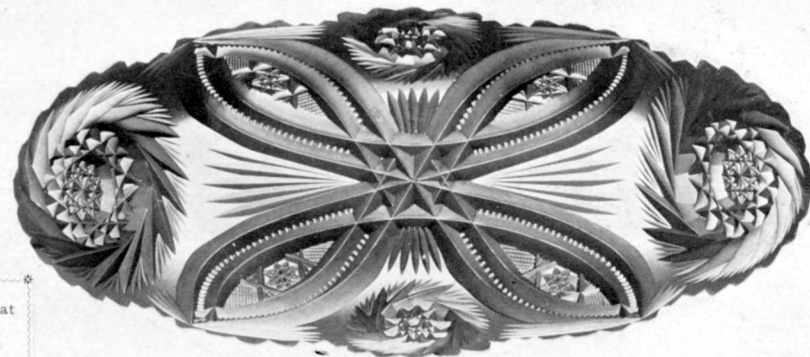


HANDLED LEMONADES
Per Dozen, - \$30.00



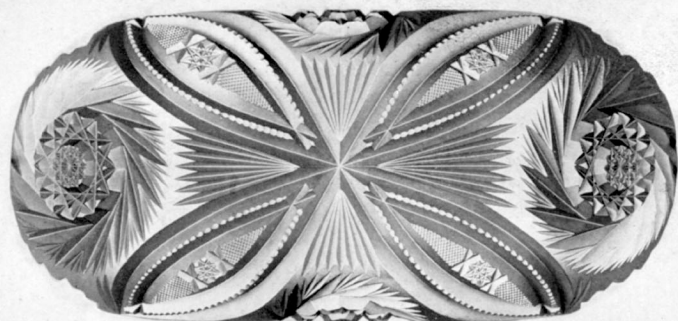
BERRY NAPPY
7 inch, each, \$7.50
8 " " 9.30
9 " " 12.00

The successful society woman understands what
will give her table an artistic touch and
loses no time in procuring it.



CELERY TRAY No. 2005
Each - \$10.50

CAROLYN PATTERN



CELERY TRAY No. 266
Each - \$18.00



CHAMPAGNE JUG No. 3858
Each - \$24.00



ICE TUB No. 242
Each - \$14.00

The gorgeous effect, rich deep cutting of this design, is sure to make customers for you.

Once establish the fact that you carry the choicest cut glass and "the world is yours."



BONBON No. 13
6 inch, each, \$5.00



SUGAR AND CREAM No. 534
Per Pair - \$11.00



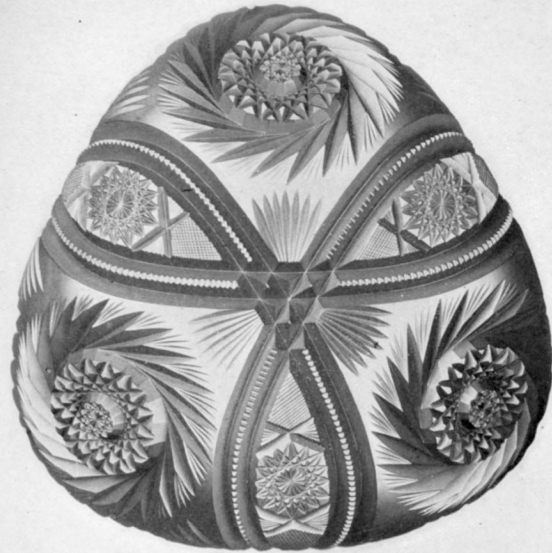
MUSTARD
Each - \$8.00



HORSE RADISH POT
Each - \$9.00

1902 Pitkin & Brooks 1903

CAROLYN PATTERN

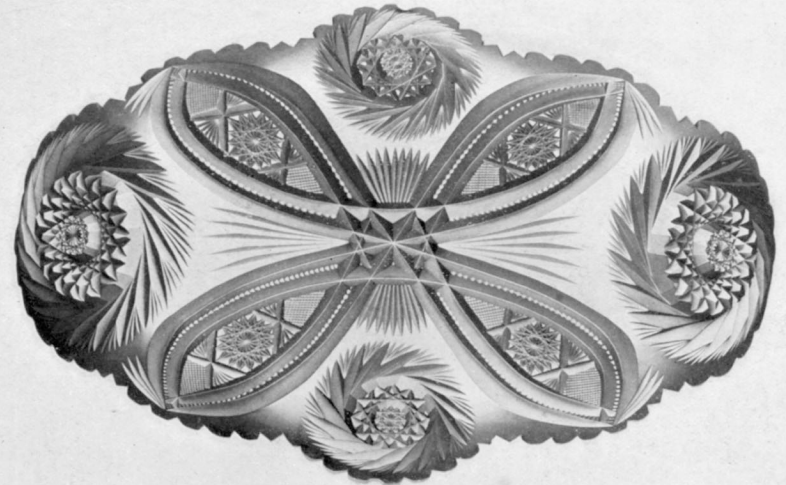


FANCY DISH No. 174
10 inch, each, \$20.00

How perfect can cut glass be made, is the problem
satisfactorily solved by our rich cut glass.



DECANTER No. 175
No handle, 14 inch, \$12.00
Handled 14.00



ICE CREAM TRAY, 14 INCH
Each - \$24.00

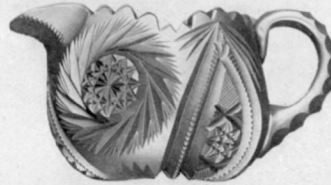
Quality wins, and it should win in cut glass. Its a
case of where only the best is worth having.



SAUCERS, 6 INCH
Per dozen, \$52.00



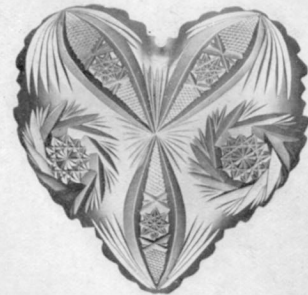
SUGAR AND CREAM
Large Size
Per Pair, \$12.00



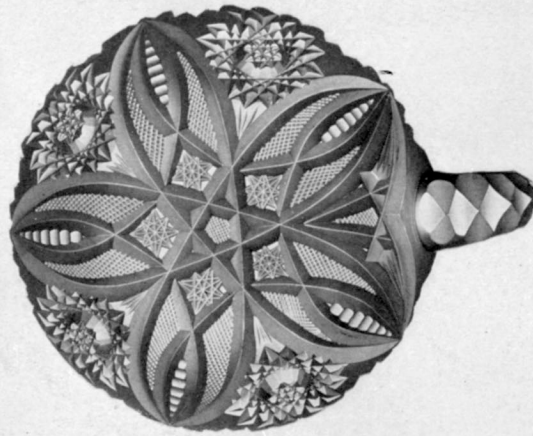
This is the "star" pattern of the season. Introduce
it and you'll be the "star" dealer of your community.



JUG No. 21, 3 PINT
Each - \$18.00

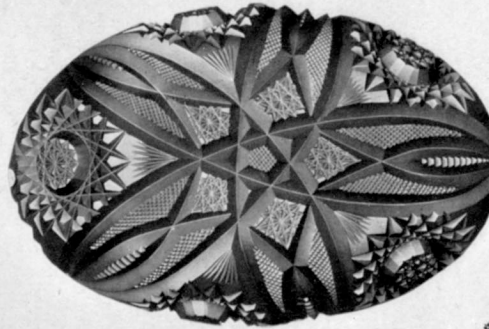


HEART BONBON No. 423
Each - \$5.00

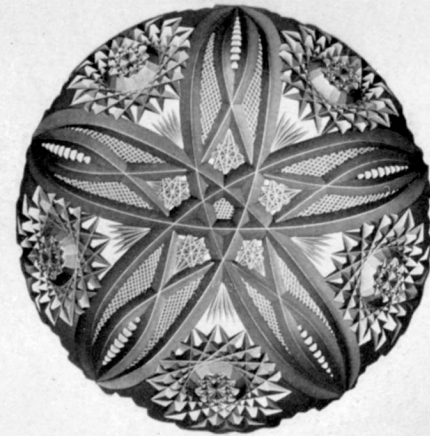


HANDLED NAPPY
6 inch, each \$5.50

REGINA PATTERN



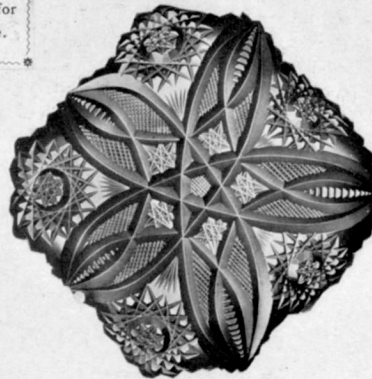
SPOON TRAY
Each - \$7.50



SAUCER, 6 INCH
Per dozen, \$60.00

Refinement in table appointments leads to a raising of the social tone of a neighborhood.

Genuine cut glass can never be mistaken for imitation any more than a diamond for paste.



BONBON NO. 421
6 inch, each, \$5.50

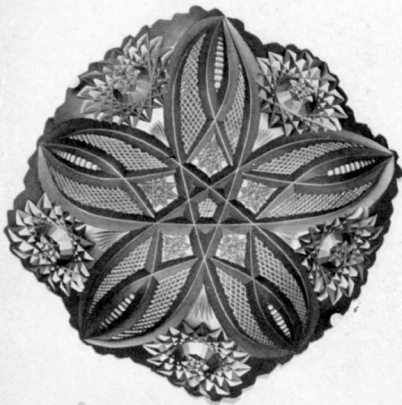
If choosing a gift for a friend, you cannot make a mistake in selecting one of the articles displayed in these pages.



CARAFE, QUART
Each - \$10.00



OIL GLOBE
Each - \$7.00

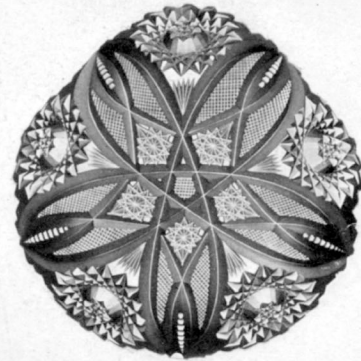


BONBON No. 13
6 inch, each, \$5.50

REGINA PATTERN

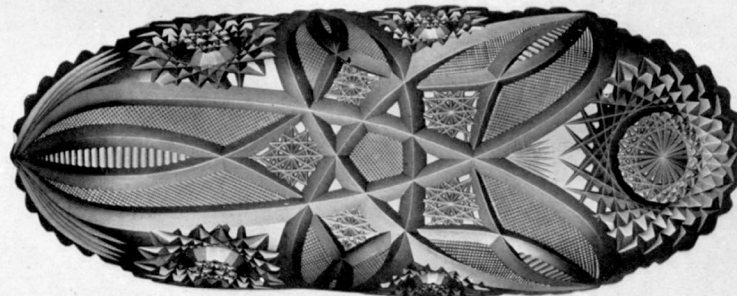


SUGAR AND CREAM No. 547
Per Pair. - \$12.00



SHELL BONBON
6 inch, each, \$5.50

"Consistency thou art a jewel."



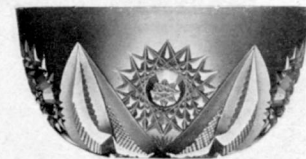
CELERY TRAY No. 1509
Each - \$14.00

Not how much, but how nice, is the question.



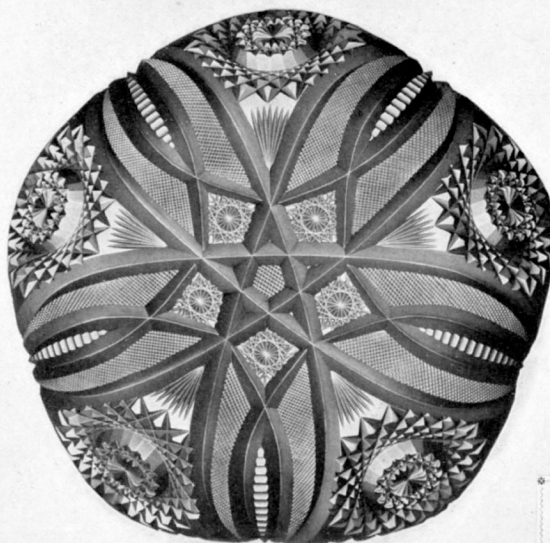
TUMBLERS, HALF PINT
Per dozen, \$36.00

Even a lovely face is distorted by a poor mirror.
But glass itself will suffer if reflected by
an inferior grade of this line of goods.



FINGER BOWLS
Per Dozen, \$45.00

REGINA PATTERN



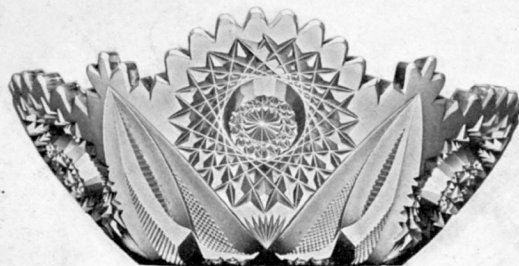
DISH No. 3
Five Roll
9 inch, each, \$16.00

NAPPY No. 509
8 inch, each, \$11.00
9 " " 13.50
10 " " 16.00

"To the good all things are pure," but to the cultivated all things are not artistic.

BERRY NAPPY
7 inch, each, \$8.50
8 " " 11.00
9 " " 13.00

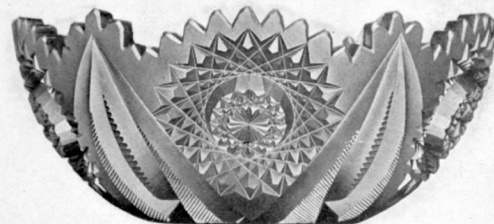
Buyers of taste desire chaste designs, deeply cut, handsomely polished.



FANCY DISH No. 2183
9 inch, each, \$18.00

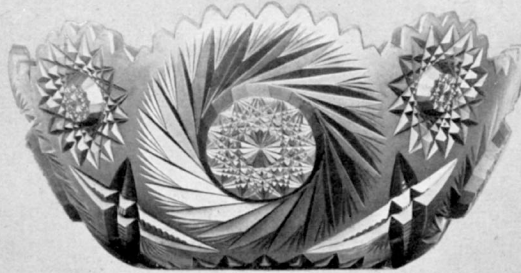
Reflecting credit on manufacturer, dealer and customer.

As each anniversary swings round, such designs as these form the most appropriate and welcome gifts.



SALAD BOWL
8 inch, each, \$13.00
9 " " 17.00
10 " " 24.00

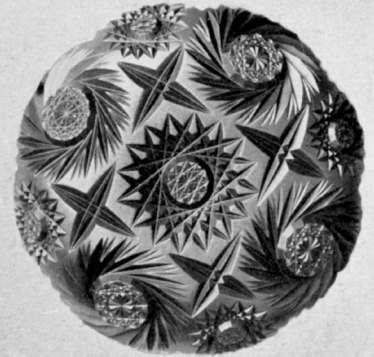
BELMONT PATTERN



SALAD BOWL
8 inch, each \$14.00
9 " " " 20.00
10 " " " 27.00

SAUCER

6 inch, each \$5.50



BERRY NAPPY

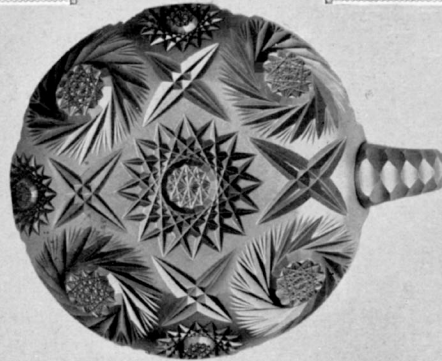
7 inch, each \$10.00
8 " " " 12.00
9 " " " 14.00
10 " " " 20.00

A royal effect that fascinates the buyer
exclusive patent.

The choicest design and effect so far pro-
duced in cut glass.



JUG 528, 2 QUART
Each \$20.00



HANDLED NAPPY
6 inch, each \$7.00



SUGAR AND CREAM
547. Per pair \$13.00



CARAFE, QUART
Each \$12.00



1902 Pitkin & Brooks 1903



WHISKEY TUMBLERS
Per dozen \$20.00

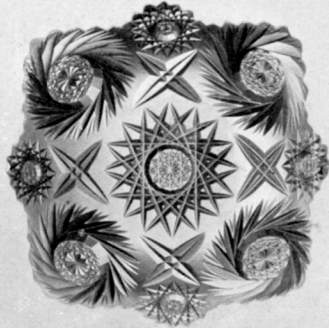
250 per



BELMONT No. 1315
10 inch, each \$15.00
12 " " 20.00
14 " " 36.00
16 " " 50.00

1905

A house is known by its goods—look at the goods.



BONBON No. 13
Each \$6.00

100 off



WHISKEY JUG
Each \$20.00

1905

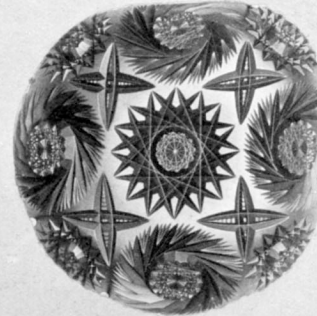
BELMONT PATTERN



OIL BOTTLE
Each \$8.00



HANDLED LEMONADE
Per dozen \$36.00



SHELL BONBON
Each \$6.50



COLOGNES
6 ounce, each \$7.50
10 " " 11.00
14 " " 17.00
16 " " 19.00



CHAMPAGNE
TUMBLERS
Per dozen \$24.00



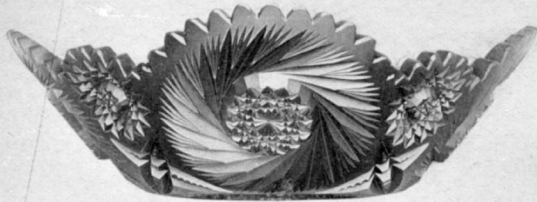
VASE 159
10 inch, each \$24.00
12 " " 36.00
14 " " 50.00
16 " " 70.00

A home is known by its furnishings—rich cut glass.

1902 Pitkin & Brooks 1903

BELMONT PATTERN

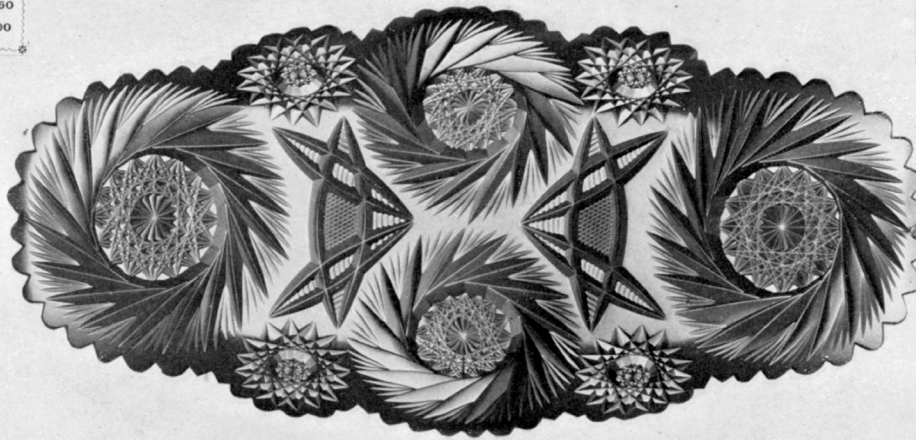
These rare designs give expression to the most exquisite ideas in art.



FANCY DISH No. 460
8 inch, each, \$12.00



MAYONAISE BOAT PLATE
No. 446
Per Set - \$14.00



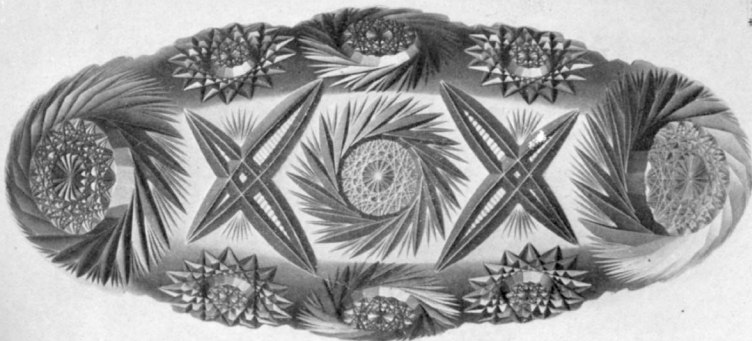
BREAD TRAY No. 545
Each - \$23.50



1905
SUGAR AND CREAM No. 3708
Per Pair, - \$11.00

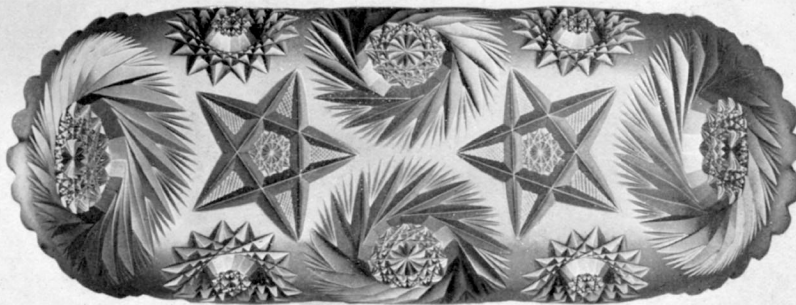


1905
SUGAR AND CREAM No. 3708
Per Pair, - \$11.00



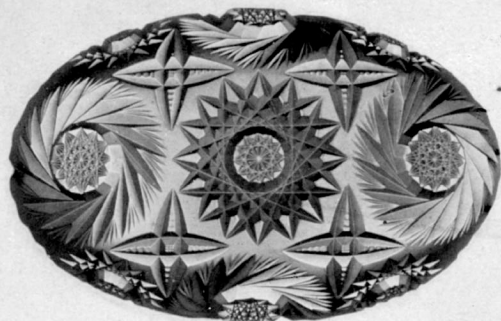
CELERY TRAY No. 2005
Each - \$11.50

"Quality wins." This is a case where only the best is worth anything.



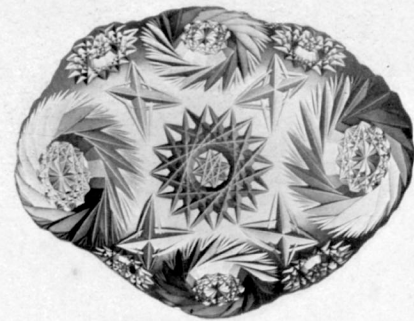
CELERY TRAY No. 466
Each - \$14.00

BELMONT PATTERN



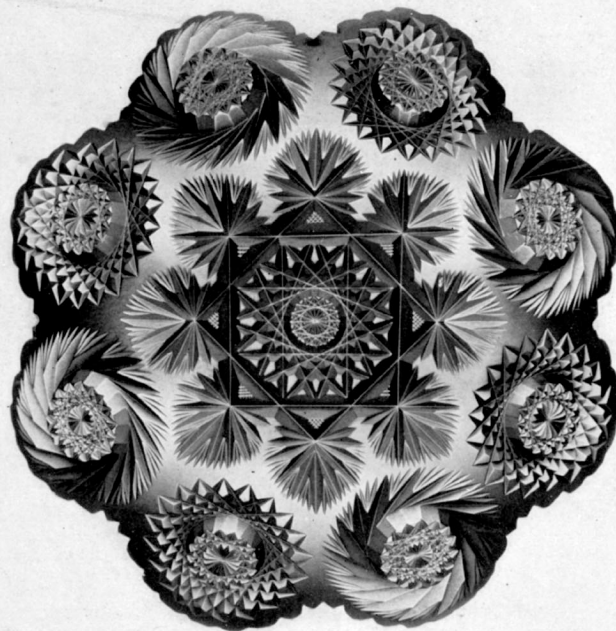
SPOON TRAY
Each - \$9.00

The glittering brilliancy of cut glass adds wonderfully to the attractiveness of a jeweler's display.



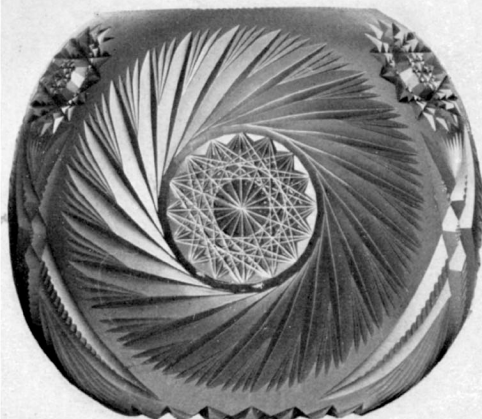
BONBON No. 48
Each - \$9.50

What cannot fail to embellish the home and give it an air of refinement, is sure to please.

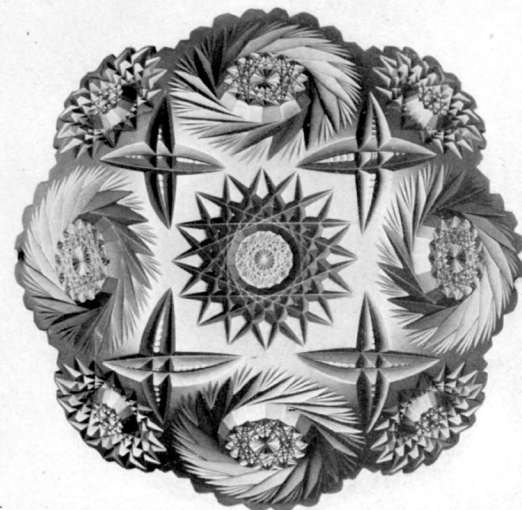


CROWN DISH No. 438
10 inch, each, \$17.00

If you do not realize the importance of carrying what your customers want, some other man will, and to him will come the profits.



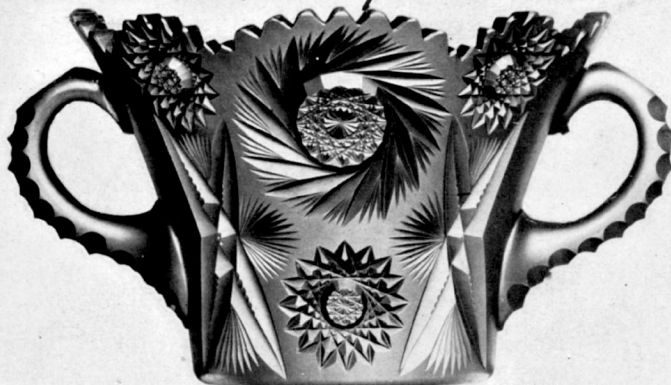
ROSE BOWL
6 inch, each, \$14.00
7 " " 18.00



PLATE, ROUND
7 inch, each, \$7.00
10 " " 20.00
14 " " 40.00

BELMONT PATTERN

180 ⁱⁿ _{per}



ICE TUB
Each - \$50.00

The ancients called cut glass "solidified sunlight."

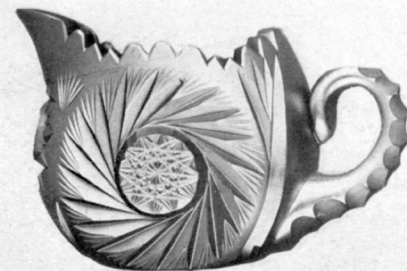
1905



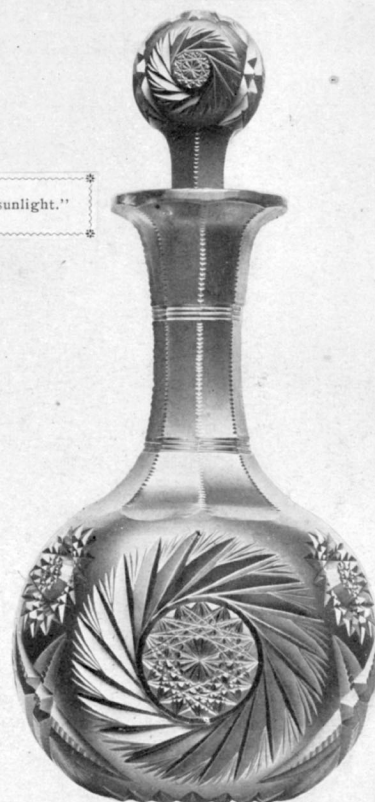
FLOWER CENTER

10 inch, each,	\$36.00
12 " "	50.00
14 " "	75.00

"The early bird gets the worm."



OVAL SUGAR AND CREAM
Per Pair, - \$16.00



DECANTER, QUART
No Handle, each, \$18.00
Handled " 20.00

OVAL SUGAR AND CREAM
Per Pair, - \$16.00



CHAMPAGNE JUG No. 583
3 Pint each \$27.00

BELMONT PATTERN

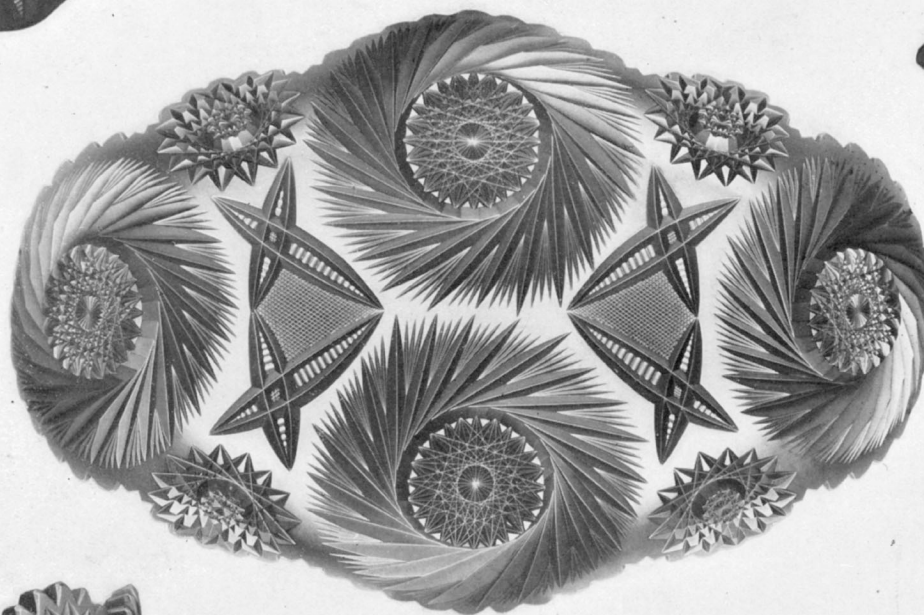
A dealer who carries a full assortment of the genuine article in all lines, will find that "all will be well with him."



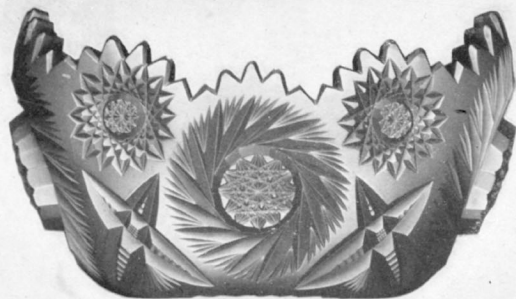
FINGER BOWLS
Per dozen, \$54.00



CHAMPAGNE JUG No. 684
2 Quart each, \$32.00



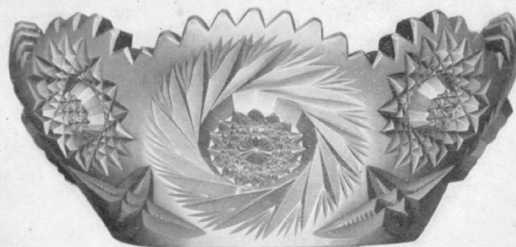
ICE CREAM TRAY No. 1
14 inch, each, \$30.00



NUT BOWL No. 411
9 inch, each, \$16.00



TUMBLERS, HALF PINT
Per dozen, \$38.40



FANCY BOWL NO. 354
8 inch, each, \$15.00

It is but justice to your customers to give them the best that money will buy.

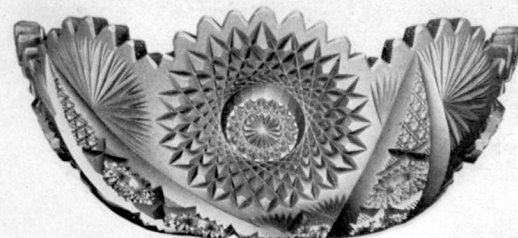
1902 Pitkin & Brooks 1903

CYPRESS PATTERN



CARAFE, QUART

Each - \$13.00

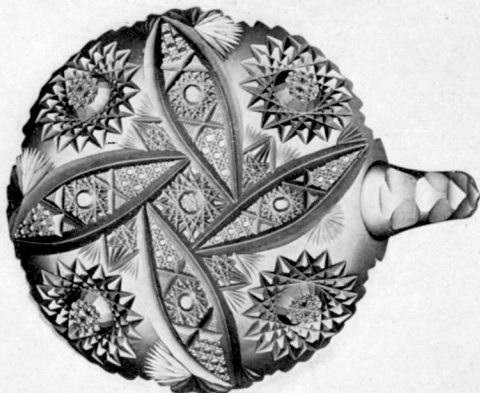


SALAD BOWL

8 inch, each, \$15.00
9 " " 20.00
10 " " 28.00

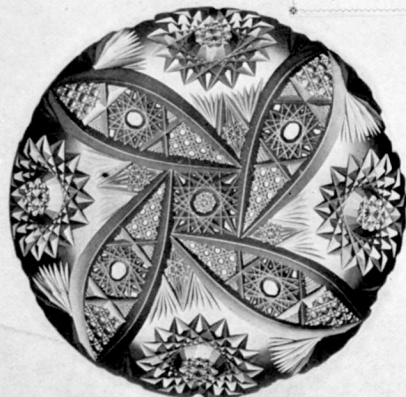
Rich cut glass is a good investment which never grows stale or tarnishes.

All designs displayed on this page are popular for they have "everything in them to make them so."



HANDLED NAPPY

6 inch, each \$7.00



SAUCER, 6 INCH

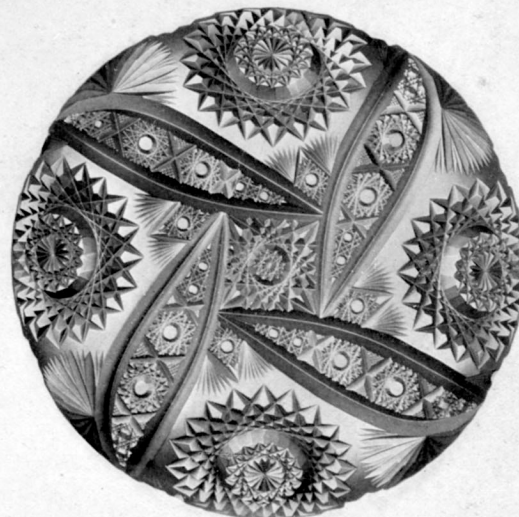
Per dozen, \$72.00



TUMBLERS HALF PINT

Per dozen, \$42.00

The most fastidiously critical are always charmed with handsome designs like these.



BERRY NAPPY

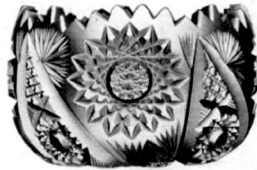
7 inch, each, \$10.50
8 " " 13.00
9 " " 17.00

1902 Pitkin & Brooks 1903

CYPRESS PATTERN



BONBON No. 13
Each - \$6.50



SUGAR AND CREAM
Large Size
Per Pair, \$16.00



SHELL BONBON
Each - \$6.50



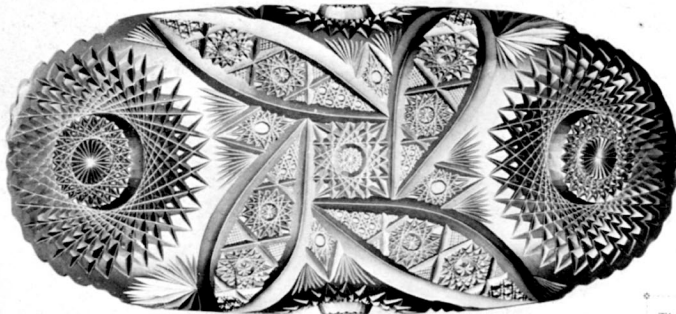
SPOON TRAY
Each - \$10.00



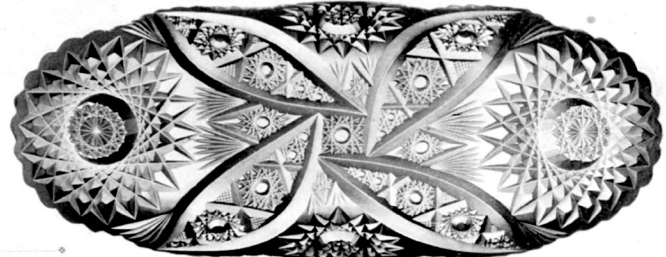
SUGAR AND CREAM No. 534
Per Pair, - \$15.00



OIL
Each - \$9.00



CELERY TRAY No. 266
Each - \$24.00



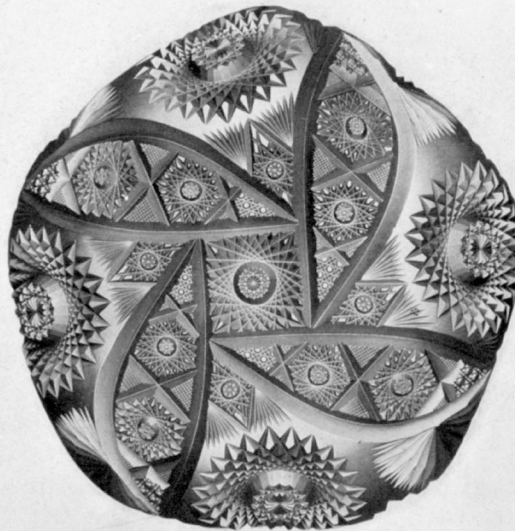
CELERY TRAY No 1509
Each - \$15.00

There are different grades even in the genuine, but the most reliable and likely to meet fullest approval, is the best.

CYPRESS PATTERN



CLARET JUG No. 519
3 pint, each, \$24.00

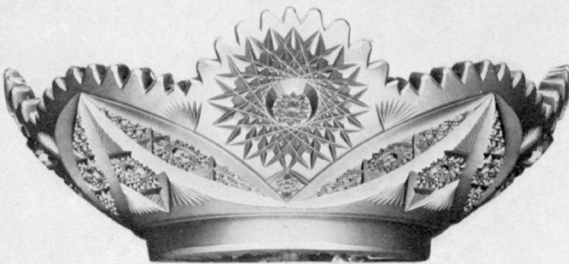


FANCY DISH No. 3
8 inch, each, \$14.00
210 w/ fm

The hues of the rainbow are rivaled by a piece of cut glass.



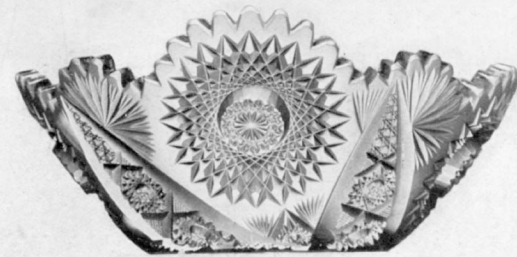
VASE No. 510
Each - \$40.00



DISH No. 544
10 inch, each, \$24.00



COMPOUND No. 218
8 inch, each, \$14.00
1905



FANCY BOWL No. 2183
8 inch, each, \$14.00
9 " " 20.00

slip. B. elmont