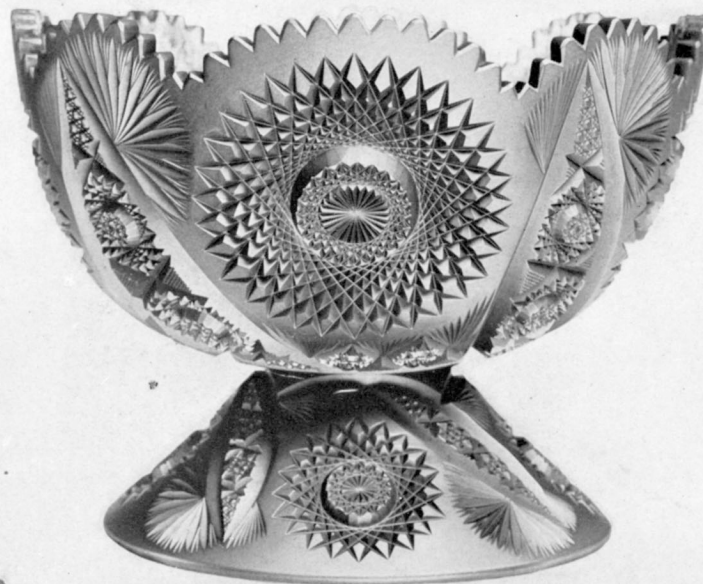


1902 Pitkin & Brooks 1903



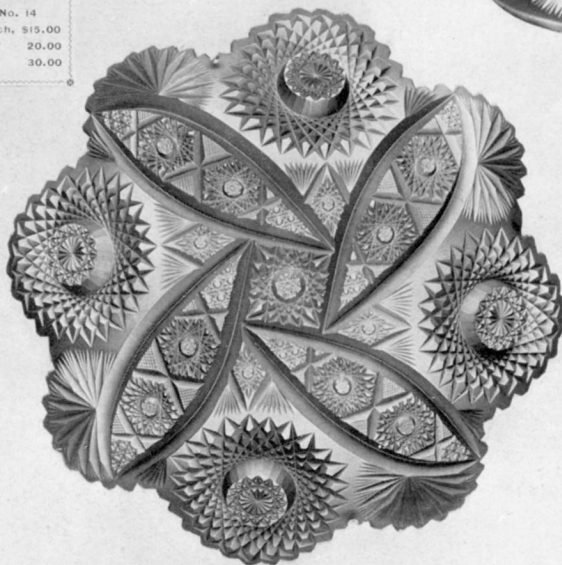
VASE No. 14
10 inch, each, \$15.00
12 " " 20.00
14 " " 30.00



PUNCH BOWL No. 211
FOOTED
12 inch, each, \$54.00



VASE No. 159
10 inch, each, \$24.00
12 " " 36.00
14 " " 50.00



FANCY DISH No. 43B
10 inch, each, \$20.00

No matter how large the collection may be,
your friend can always find room
for "one more" piece.

"The gift without the giver is bare." Put a
little of yourself into the selection of every
gift, however small.

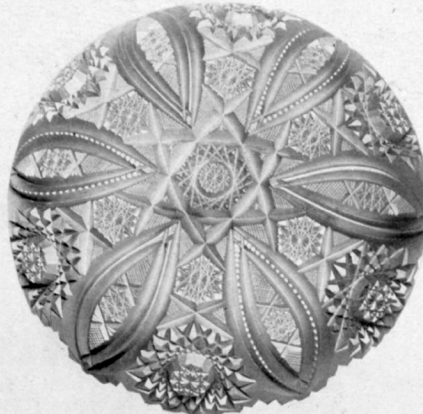


ICE TUB No. 242
Each - \$17.00

GARLAND PATTERN



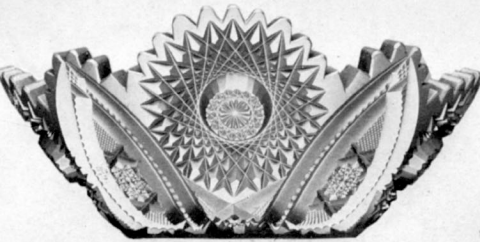
2 QUART JUG, No. 134
Each - \$30.00



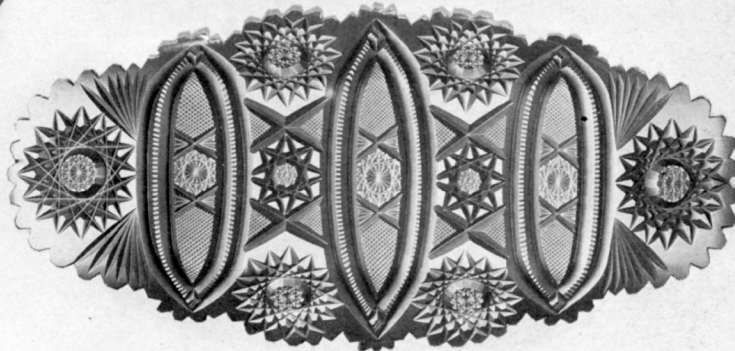
BERRY NAPPY
7 inch, each, \$11.00
8 " " 13.50
9 " " 16.50



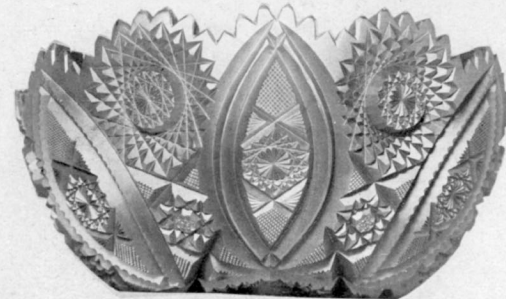
CARAFE, QUART
Each - \$13.00



FANCY DISH No. 2183
8 inch, each, \$16.00
9 " " 20.00



BREAD OR CREAM TRAY No. 545
14 inch, each, \$24.00



SALAD BOWL
8 inch, each, \$16.00
9 " " 22.00
10 " " 30.00

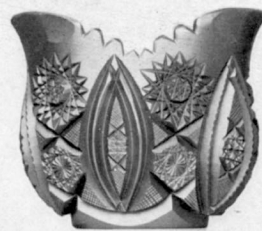
"Art is long and time is fleeting," but surely and steadily is the demand for a high-grade class of goods, growing in every community.

The sum and substance of all this is - know what is good, then buy it or do without. Better nothing than an inferior article.



BONBON No. 54
Each - \$7.00

GARLAND PATTERN



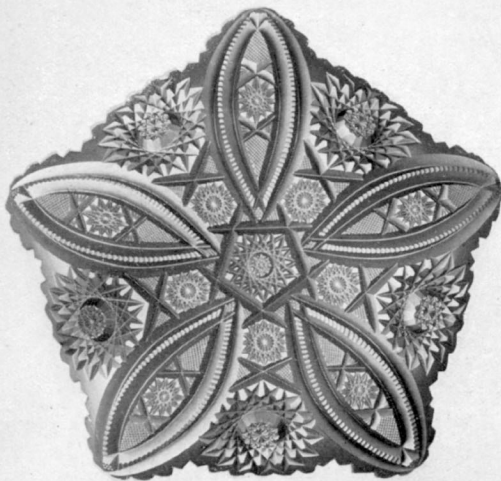
OVAL SUGAR AND CREAM
Per Pair, \$18.00



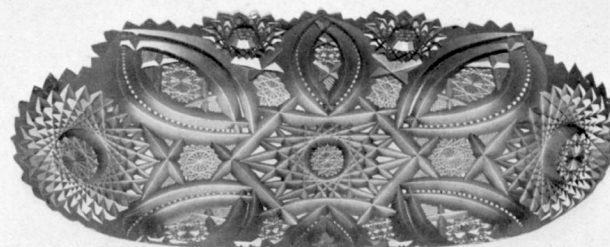
SAUCER, 6 INCH
Per Dozen, \$28.00

Your customers know a good thing when it
is brought to their notice - these
are exceptionally good.

By a little patience and a good display almost
any customer can be cultivated into
an appreciation of cut glass.



DISH No. 509
9 inch, each, \$18.00



No. 1509 CELERY TRAY
Each - \$16.00

To admit that the imitation is preferred to the
genuine is a reflection on yourself as
well as your customers.



FIVE ROLL FANCY DISH No. 3
9 inch, each, \$20.00

1902 Pitkin & Brooks 1903

GARLAND PATTERN



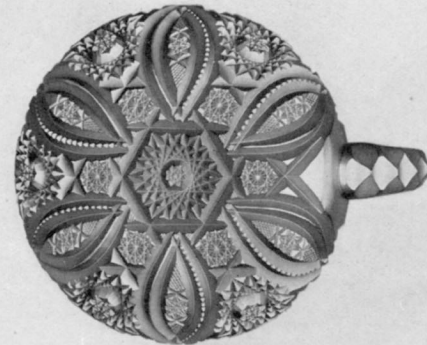
SUGAR AND CREAM No. 547
Per Pair, \$15.00



SPOON TRAY
Each - \$11.00



ICE CREAM TRAY
14 inch, each, \$36.00



HANDLED NAPPY
6 inch, each, \$7.50



HANDLED LEMONADES
Per dozen, \$48.00



COLOGNE
10 Oz. each, \$13.00
14 " " 17.50.

It is impossible to get more out of a substance than it contains. An inferior grade of glass will not meet the lovers of the beautiful in art.



OIL BOTTLE
Each - \$10.00



TUMBLERS, HALF PINT
Per Dozen, \$48.00

1902 Pitkin & Brooks 1903

GARLAND PATTERN



JUG No. 528
2 Quart, each \$24.00



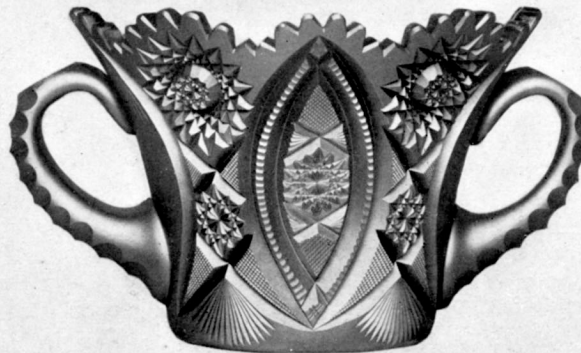
ROSE BOWL
7 inch, each, \$20.00



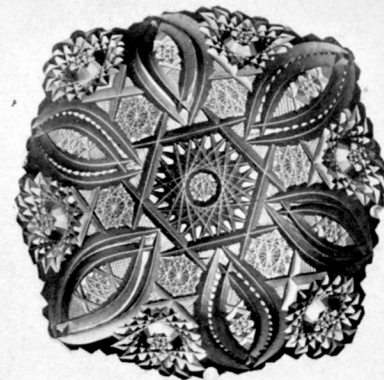
WHISKEY JUG
Each - \$24.00



BONBON No. 48
Each - \$6.50



ICE TUB No. 639
Each - \$24.00



BONBON No. 13
Each - \$7.00

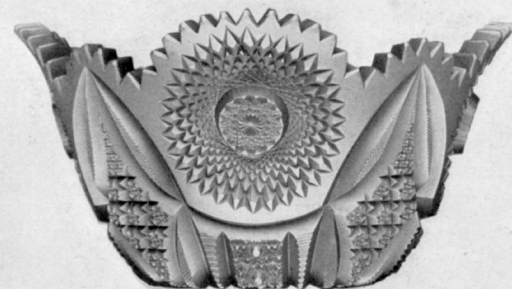
The art of the perception of beauty is epitomized in richness and brilliancy as well as depth of cutting in these designs.

A gift of this nature confers pleasure both on doner and receiver.

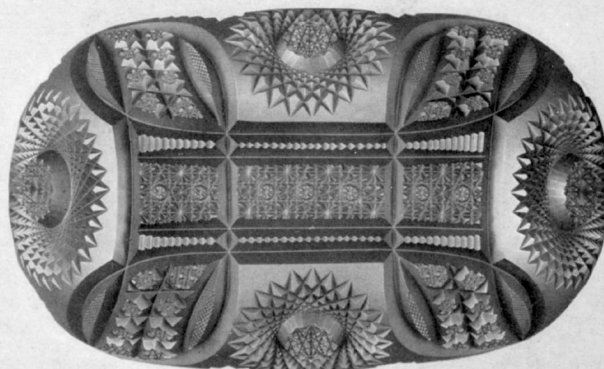
MAYFLOWER PATTERN



SUGAR AND CREAM No. 547
Per Pair, \$18.00

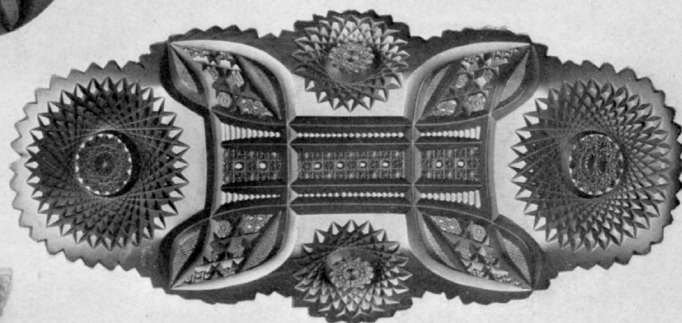


FANCY BOWL No. 576
10 inch, each, \$36.00



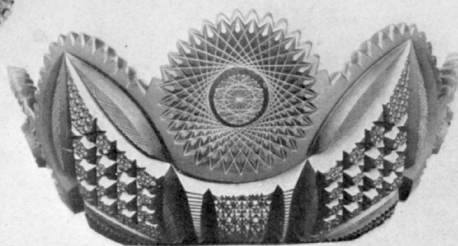
ORANGE DISH No. 222
10 inch, each, \$27.00

Cultured people have come to realize that no festival ceremony or banquet of any kind, is complete without a full assortment of the various designs of cut glass.

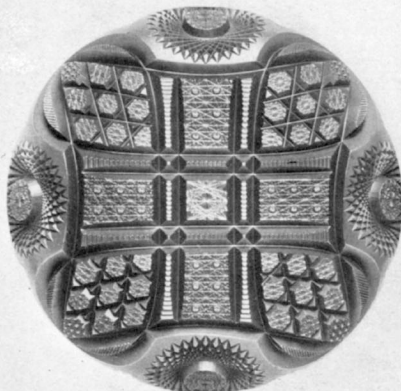


ICE CREAM TRAY No. 545
12 inch, each, \$27.00

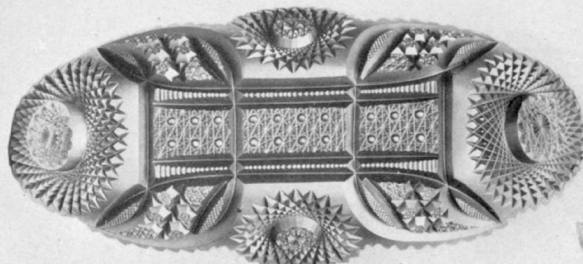
Nothing succeeds like success.



SALAD BOWL
8 inch, each, \$20.00
9 " " 27.00
10 " " 33.00



BERRY NAPPY
7 inch, each, \$14.00
8 " " 17.50
9 " " 20.00



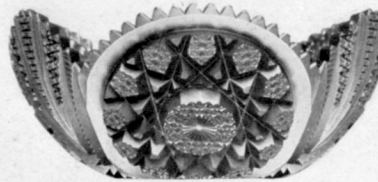
CELERY TRAY
Each \$20.00

"Know the face of the cards."

1902 Pitkin & Brooks 1903



CELERY TRAY No 2005
Each - \$18.00

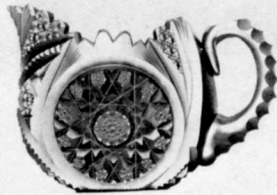
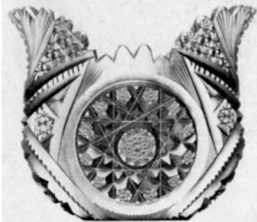


GLORIA PATTERN

SALAD BOWL
8 inch, each, \$20.00
9 " " 27.00
10 " " 33.00



TUMBLERS HALF PINT
Per dozen - \$72.00



OVAL SUGAR AND CREAM
Per Pair. - \$24.00



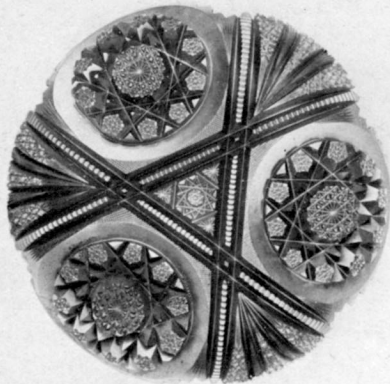
CARAFE
Each - \$20.00



JUG No. 134, 2 QUART
Each - \$40.00

A pleased customer is the best advertisement any firm can possess.

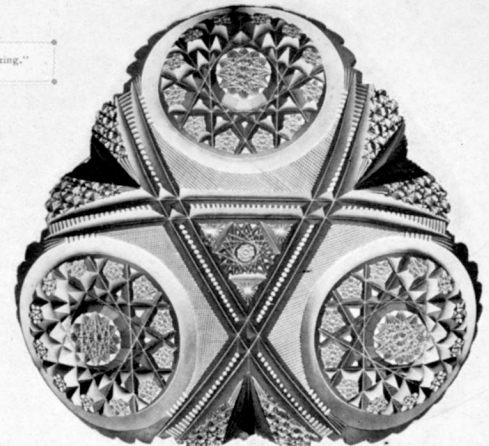
"Bubbles we buy with a whole soul's tasking."



BERRY NAPPY
7 inch, each, \$14.00
8 " " 17.50
9 " " 20.00



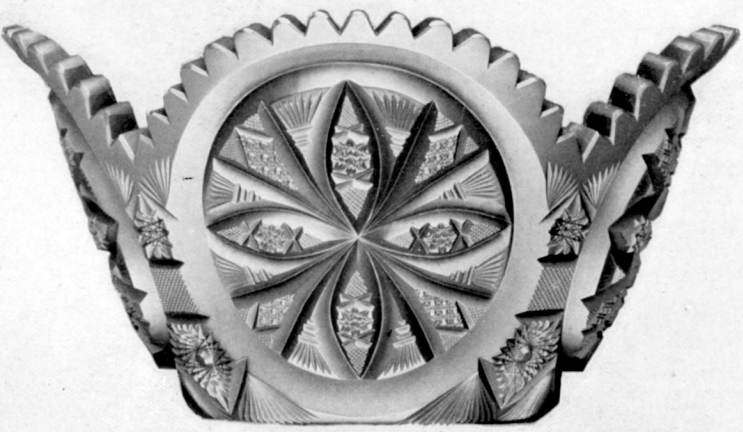
DISH No. 63
7 inch, each, \$12.00



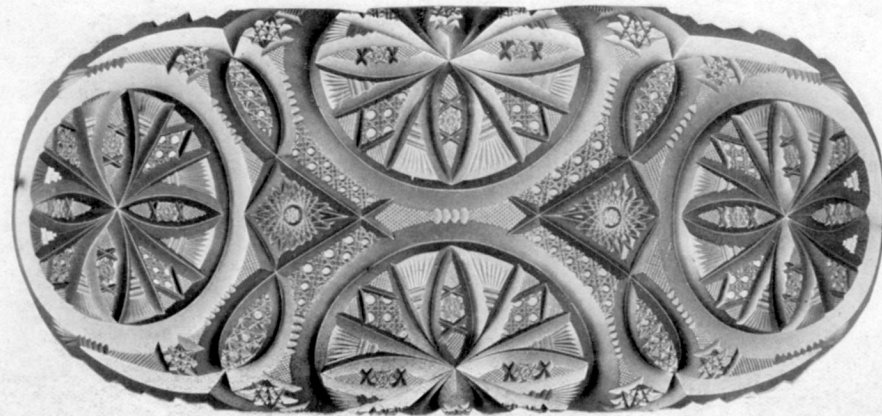
CLOVER LEAF FANCY DISH
9 inch, each, \$27.00

1902 Pitkin & Brooks 1903

ELITE PATTERN

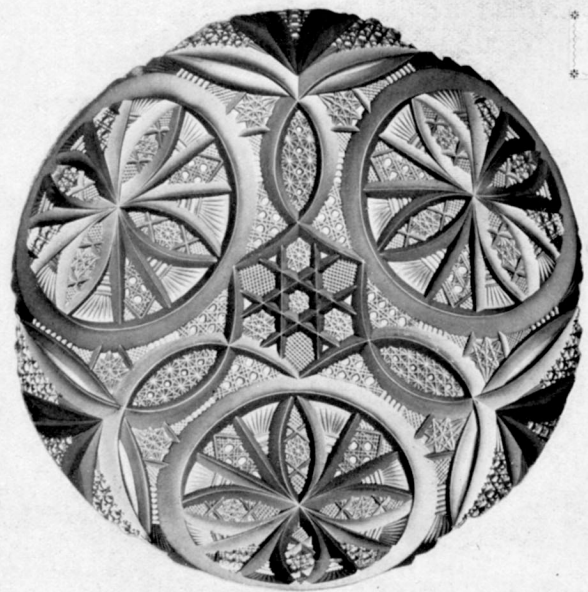


FANCY BOWL No. 576
10 inch, each, \$40.00

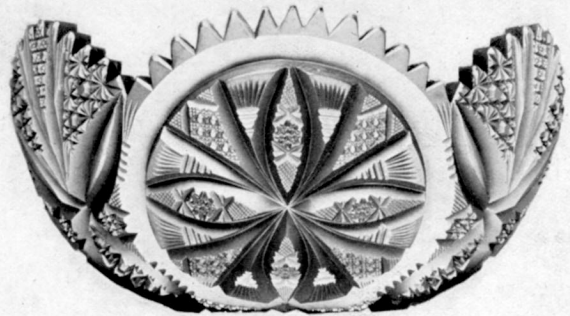


CELERY TRAY No. 266
Each - \$30.00

As your goods are, so are you.



BERRY NAPPY
8 inch, each, \$18.00
9 " " 22.00



SALAD BOWL
8 inch, each, \$24.00
9 " " 30.00
10 " " 36.00

Art in any line, appeals to people of refined tastes.

1902 Pitkin & Brooks 1903

STEMWARE



An excellent article gives a never-ending pleasure.



"Good fortune waits on the appetite."



VASES AND PUNCH BOWLS



ERIE VASE

8 inch, each,	\$3.00
10 " "	4.00
12 " "	5.30
14 " "	7.50
16 " "	12.00



CAROLYN

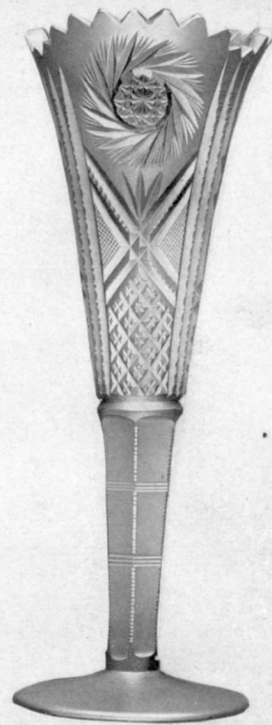
LOW FOOTED, No. 493
14 inch, each, \$80.00

The manufacturers have done their part in producing designs such as these - it remains with the dealer and consumer to take advantage of the opportunities offered.



CYPRESS No. 159

10 inch, each,	\$27.00
12 " "	40.00
14 " "	60.00



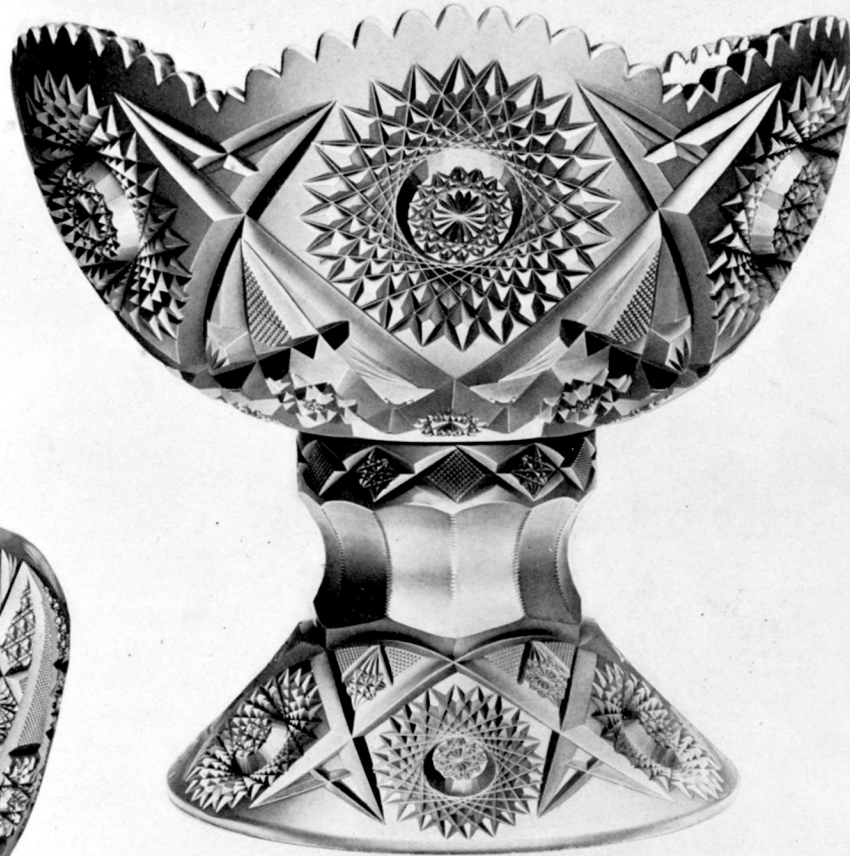
LEHIGH VASE

8 inch, each,	\$5.00
10 " "	6.50
12 " "	9.00
14 " "	12.00

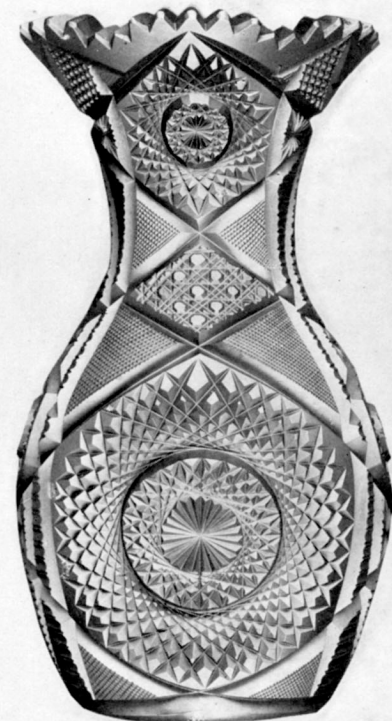
Some men meet "good fortune" by going out after it, not waiting for it.

VASES AND PUNCH BOWLS

Feel the business pulse and meet the emergency.



BRILLIANT FOOTED No. 211
14 inch, each, \$75.00



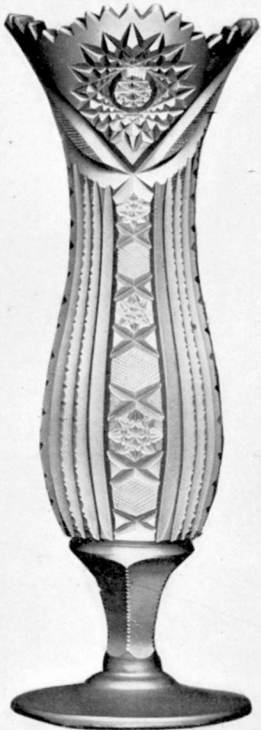
No. 26. 8 inch, each, \$20.00
" 27. 10 " " 27.00
" 28. 12 " " 36.00



CYPRESS No. 510
10 1/2 inch, each, \$40.00

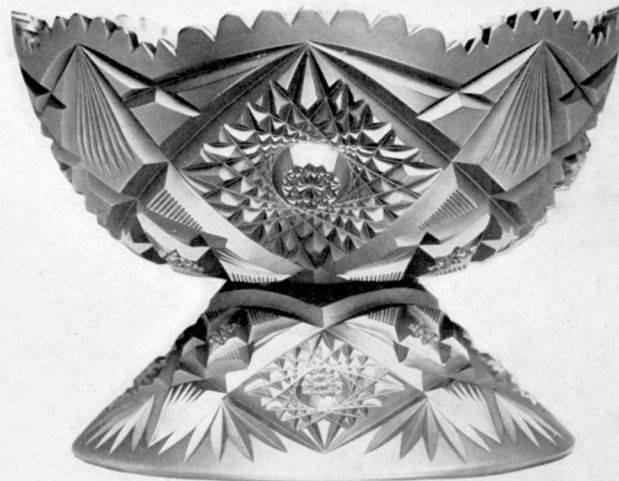
It is not necessary to order from stock, for mail orders are filled with as much care as those given in person.

VASES AND PUNCH BOWLS



FLORA No. 1019
10 inch, each, \$9.00
12 " " 12.00

There are always plenty of people willing to buy,
provided they get what they want.



TOKIO FOOTED No. 211
10 inch, each, \$27.00



CYPRESS FOOTED No. 211
12 inch, each, \$54.00



CYPRESS No. 14
10 inch, each, \$15.00
12 " " 20.00
14 " " 30.00

All for the good of your customers - teach them
to know what is artistic, beautiful, flawless.

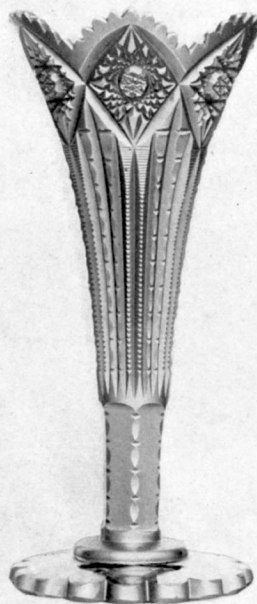
These designs alone demonstrate why America's
supremacy is undisputed.

VASES AND PUNCH BOWLS

Some things speak for themselves.



CAROLYN FOOTED No. 307
12 inch, each, \$50.00



SHREVE VASE
8 inch, each, \$9.00
10 " " 12.00
12 " " 16.00
14 " " 24.00



CYPRESS FOOTED No. 1
14 inch, each, \$120.00

1902 Pitkin & Brooks 1903

What's the use of considering the dull and tawdry when you can get rich cut glass at these prices.

PUNCH BOWLS AND VASES

No one with a soul can withstand such gorgeous, brilliant, crystalline effects —be equal to the occasion.



BELMONT No. 159
 10 inch, each \$24.00
 12 " " 36.00
 14 " " 50.00
 16 " " 70.00



BELMONT
 14 inch
 No Foot, Each \$60.00
 Footed, " 100.00



BELMONT No. 1315
 10 inch, each \$15.00
 12 " " 20.00
 14 " " 30.00
 16 " " 50.00

Give to the public something superior and you'll have a monopoly.

PUNCH BOWLS AND VASES

Here's the opportunity. You know what to do next; if not, ask us.

Venus in all her beauty would tingle with jealousy at sight of this.



FLORA No. 1315
8 inch, each \$7.00
9 " " 9.00
10 " " 12.00
12 " " 16.00
14 " " 24.00

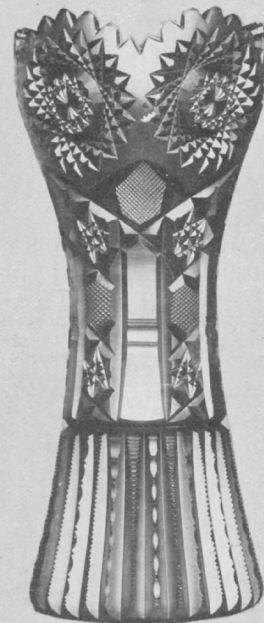


CLORIA
14 inch, footed,
Each - \$150.00

If you are only playing for the ten-twenty-third trade don't touch these.

The brave man carves out his own fortune—a little boldness and some of this rich cut glass will "make you" if you'll let it.

A distinctive class of goods that appeals to "best trade."



CASINO No. 1315
10 inch, each \$13.00
12 " " 20.00
14 " " 30.00

THE GROWING POPULARITY OF CUT GLASS

Everyone wants cut glass these days, for sideboard, dining table, buffet, dresser, parlor and even the office. Naturally enough they are attracted to a store that has a goodly assortment of it. They may not say anything about it if you haven't it; but they flock to the store that has, and without hesitation, consider that store the most up to date.

Few people realize the amount of thought, artistic and mechanical skill and time required to change shapeless masses of glass into the many tempting designs of cut glass now so familiar.

The manufacture of cut glass is an art, and one which has been developed to a wonderful degree during the past few years, especially in America. A decade ago cut glass was almost all imported; to-day the dealer handles the American product almost exclusively. Cut glass of American manufacture so far exceeds that of foreign make that there is little demand for the latter.

The American manufacturer understands his business thoroughly, and takes advantage of every opportunity offered for securing the best material, skilled workmanship and designs. His product is so perfect in every particular that it seems almost impossible to improve upon it.

American glass cutters have become the most expert in their work of any in the world, and modern facilities have been invented to reduce the cost of production. The limit seems to have been reached.

As a result, cut glass is to-day the most beautiful ever known, and the lowest in cost.

American cut glass in color, weight and finish is unsurpassed, and it has a brilliancy, sharpness and scintillating brightness which cannot be excelled. Of course, there are different grades of American cut glass, and, like many other classes of goods, the market is flooded with inferior stuff, full of flaws, poor workmanship, and made after designs that are clumsy and inartistic.

Poor cut glass is a bad investment, both for the dealer and the customer, and one that does not build business. Rich cut glass is a good investment, grows in increasing appreciation, and is one of the best articles that a merchant can put on to "pull" for him.

THERE'S A "SEA" OF BUSINESS IN CUT GLASS RIGHT AT
YOUR DOOR. WHAT ARE YOU GOING TO DO ABOUT IT?